



Photo by Phoebe Bruins

Important Calf & Rural Scheme update

Friends in Rural Communities - Audrey and Liz

Thanks to the support of the community, the Calf & Rural Scheme supports people with intellectual disabilities living in rural areas. One of the ways to help is to support people with intellectual disabilities to have a friend, someone they can get out and about with in their local community and have fun.

Audrey and Liz were matched by the IHC Friendship Programme just over a year ago. They both live in Morrinsville. Liz says she joined the programme as her family and her husband's family have been associated with IHC for many, many years. "I wanted to spend time helping people with intellectual disabilities," Liz said.

Audrey loves getting out with Liz, she says their friendship makes her "happy." The pair meet up for a couple of hours each week. They usually start by going to a café and having a catch up. "We like to sit outside if we can," Liz said. "People in the community have got to know Audrey, so she likes to sit outside where people will come and talk to her."



Audrey and Liz love getting out and about in their local community

Liz says it can be difficult to understand what Audrey is saying. "Over time I've been able to understand her more, we laugh together and chat. Liz says if something is worrying Audrey she will tell her. "We confide in each other."

When they leave the café they often head to the library. There is a story and singing group that Audrey enjoys being part of. When asked what her favourite thing to do at the library is, Audrey says

"computers." Liz says Audrey has learnt to use the touch screen computer so she can watch videos on YouTube.

"Audrey's favourite videos are funny animal videos, she laughs and laughs!"

"Audrey is a very sweet woman and it's a pleasure to be with her. She gives me more than I can give her," Liz says. "Thanks to the Calf & Rural Scheme donors who make friendships like ours possible."

The missing 900

IHC is missing 900 calves that were pledged last year but didn't make it to sale because of lockdown.

Do you have an IHC calf still on your farm from last year?

Please help IHC find the missing 900.

Please see the sale dates on page two.

Call Josie on the
Missing Calf hotline 0800 442 500,
with any information on the missing 900.



You asked for it, so the Top Pen is Back!

Top Pen recognition and prizes are back. We got a lot of feedback that farmers wanted this opportunity to compete with each other while raising funds for IHC. So, the good people at PGG Wrightson Livestock have come to the party with 10 prizes of \$100 vouchers to be used at their Rural Supplies Stores.

The prizes will be drawn in 10 different regions covering all eligible sales. All farmers whose calves make the top 10 percent at each sale will receive an IHC certificate of recognition. They will also go into their respective regional draw for one of the 10 prizes from PGG Wrightson Livestock. "We want to give a pat on the back to the farmers and their family members who put that extra effort into rearing their IHC calves," says Lynda Young-Kennedy, Calf Scheme Coordinator.

For more information about the Top Pen, please see our website ihc.org.nz/calfsale



Recommended Sale Dates

PGG Wrightson Livestock recommend sending your calf/calves to the following sales to be entered in to the Top Pen draws. These are not IHC specific sales as were held in the past.

PGW Livestock Reps	Sale Location	1st Sale of Weaner Calves
Jeff See 027 568 0813	Taranaki	Dairy Beef sale dates Thursday 19th November Thursday 3rd December
Paul Jefferies 027 591 8632	Feilding (Includes wider Manawatu & Wairarapa)	Dairy Beef sale dates Thursday 12th November Thursday 26th November
Simon Rouse 027 492 4805	Rangioru	Weaner Dairy Beef Wednesday 28th October Tuesday 3rd November
Brad Osborne 027 208 1015	Tuakau	Dairy Beef Day Friday 6th November
Neil Lyons 027 223 5784	Frankton	Monday 9th November
Bjorn Anderson 027 440 5888	Dannevirke (Includes wider Wairarapa & Southern Hawkes Bay)	Dairy Beef sale dates Tuesday 10th November Tuesday 24th November
Rhys Mellow 027 664 5143	Paeroa	Dairy Beef Sale Friday 13th November
Grant Pallister 027 590 2201 Rich Healey 027 972 7372	Wellsford	Monday 23rd November Monday 30th November
Vaughn Vujcich 027 496 8706	Kaikohe	Weaner Day Wednesday 25th November Wednesday 2nd December
Craig Taylor 027 435 7437	Golden Bay	Calf Sale Thursday 26th November
Mike Broomhall 027 520 0965	Lorneville	Tuesday 8th December Tuesday 15th December
Simon Vernon 027 405 8248	Waiareka	Monday 30th November Monday 7th December
Robbie Lash 027 438 4802	Ross	TBC - No set day, December onwards please ring Robbie 027 438 4802
Stu Walsh 027 434 4093	Canterbury Park	Tuesday 1st December Tuesday 15th December
Neil Common 027 444 8745	Stortford Lodge	Weaner day Wednesday 02nd December Wednesday 9th December
Craig Taylor 027 435 7437	Brightwater	Wednesday 02nd December Wednesday 9th December
Morice Stratford 027 434 4066	Blenheim	Send to Brightwater (see above)
Paul Anthony 027 534 2514	Charlton	Please contact Paul Thursday 10th December
Barry Fox 027 439 3317 Victor Schikker 027 590 8061	Temuka Ashburton Rep	Calf Sale Thursday 10th December Thursday 17th December

What you've achieved in 2020

Thanks to your amazing support of the Calf & Rural Scheme, people with intellectual disabilities were kept safe and busy during the COVID-19 lockdown. In what was an unsettling time for everyone, people with intellectual disabilities, particularly in rural areas, struggled. But you, and IHC were there for them in so many ways.

Keeping people connected

You helped people who didn't have phones or computers keep in touch with friends and loved ones by providing communication devices and phone top ups during COVID-19. You are also helping

on an ongoing basis to provide electronic equipment so that if the country, or even just one of our supported living homes, had to go into lockdown, staying in touch with friends and loved ones will be easier.

You have provided

50 mobile phones to people who needed them during lockdown



140 mobile phone top ups for people who ran out of credit during lockdown

622 tablets to help people keep in touch with friends and loved ones everyday



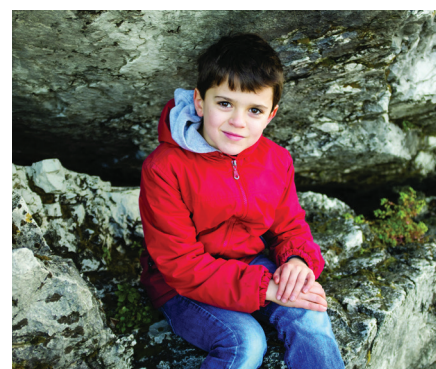
Helping families in crisis

In the past 12 months, 218 families have found themselves in crisis and been referred to IHC's Family/Whānau Liaison Service. These are families who don't know where to turn. They need help to find out what services are available to them in their local area. Finding this support is hardest for those in rural areas.

For families whose child was not diagnosed with an intellectual disability at birth, getting a diagnosis when they are older and struggling at school can make a real difference. We have previously told you the story of Sam, a little boy who was failing at school and sad, frustrated and lonely because he couldn't keep up with the other kids. With the help of IHC's liaison service he was diagnosed as having an intellectual disability. This diagnosis meant he could access funding for a Teacher's Aide to help him in class.

Sam was attending a special school which, because he lives in a rural area, was quite a distance from his home. He was finding the travel tiring and being one of the more able children at the school he again felt he didn't fit in. So his grandmother once again contacted Jim the local liaison in their area and asked for help.

Now that Sam has funding for extra support, the local school were happy to enrol him. "This has been great for Sam as he can walk to school with his mum or grandma. He attends school half days, five days a week as this is all he can handle at the moment, but he is starting to thrive," said Jim, IHC's Family/Whānau Liaison.



Developing new ways for people to get information

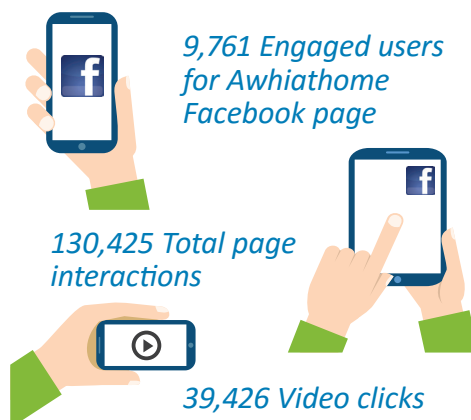
You are also helping to develop a new way for people to get information on intellectual disabilities. For years you have supported IHC's Library Service send out books to people who need information. "It's a great service, but we just want to do better," said Philip Clark, IHC's Head of Library and Information Resources. "We want to make this information more accessible to people from different ethnic backgrounds, ages and levels of literacy. With an online resource people won't have to wait for books to arrive in the post."

Planning for this new library/information hub was already underway when the country went into lockdown. The need to provide information meant that Facebook was chosen to host Awhiathome as most people are already familiar with it and the page could be up and running in minutes.

People were seeking information on things like anxiety and behavioural issues.

There were parents seeking support from other parents who understood the problems they were facing. Video content proved to be very popular. "Short videos giving information or interviews with other parents is what people wanted more of," said Philip.

Awhiathome has been so successful it continues to provide information and is being further developed. While the Facebook page will remain, the information will be made more easily accessible and searchable on a new website in the coming months.



What's your lasting legacy?

You have shown you care about people living with intellectual disabilities during your lifetime. A gift in your Will can make a huge difference in the lives and futures of New Zealanders with intellectual disabilities living in your community.

This could be your lasting legacy. For more information or to tell us you have left a gift to IHC in your will, so we can thank you for this during your lifetime, please phone Chansina Chin on 0800 746 444 in confidence.



Win



Two chances to win a Mystery Weekend

There are two chances to win a mystery weekend if you sell your calf or donate before 31 January 2021. Winners will be notified.

Draw One – live animals sold for \$300 and over before 31 January 2021

Draw Two – All donations of \$300 and over received before 31 January 2021, this includes virtual calves, average price donation etc.

The winners of June's pre-pledge draw were **David and Kaye-Maree Olesen** (North Island) and **Wayne and Nicky Packard** (South Island). Congratulations!



Instagram

@ihccalfandrural

Thank You!

IHC is grateful to all the people who make the Calf & Rural Scheme such a success. Thanks to all you wonderful farmers who donate, the reps at PGG Wrightson Livestock who help sell the animals, and the freight companies that get the calves to sale at no or a reduced cost. We'd also like to thank our sponsors.

Principal sponsor

PGG Wrightson Livestock



Commercial
Vehicles



Livestock Intelligence™

Friends of IHC

Photo Competition – enter before Friday 6 November



We love seeing the photos of the calves you raise for the Calf & Rural scheme and other images of life in rural New Zealand. Enter your photos and be in to win a \$100 Prezzy Card.



2019 Winner Farm Animal(s) Category

Tineke Smit – Young and old

There are three categories in the Calf & Rural Scheme Photo Competition this year

- IHC Calf (show us your ear tag)
- Farm Animals
- Landscapes

Enter online at ihc.org.nz/photocomp2020 by 6 November 2020.